

Factors, Multiples, HCF and LCM

Literacy

Unscramble the anagrams and define the words.

cfroast

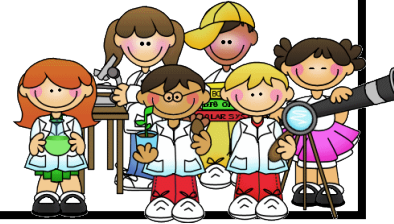
nomcom

sumliep

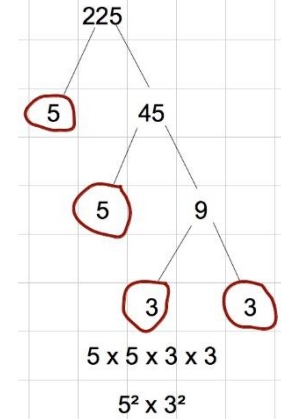
sigheth

Research

When might you use the HCF and LCM in real life?



Factor trees are used to find the product of prime factors. The two branches multiply together to make the number above. Circle and stop at prime numbers.



Memory

Skill 1 Factors and Multiples

1) List first five multiples of:

- a) 8
- b) 12
- c) 18

2) List all the factors of:

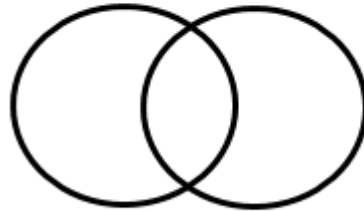
- a) 16
- b) 36
- c) 48

HCF and LCM

Find the HCF and LCM of 72 and 36
Step 1 – factor trees

Skill 2

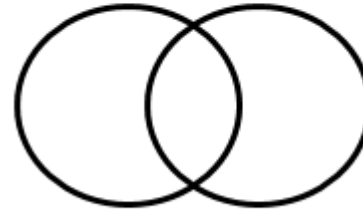
Step 2 Venn Diagram



Step 3 – HCF and LCM
(HCF-all middle numbers multiplied, LCM all numbers multiplied)
HCF=
LCM =

Find the HCF and LCM of 81 and 48
Step 1 – factor trees

Step 2 Venn Diagram



Step 3 – HCF and LCM
(HCF-all middle numbers multiplied, LCM all numbers multiplied)
HCF=
LCM =

Stretch

Worded Exam Question

Bus A stops every 12 minutes and Bus B stops every 9 minutes on the same circuit. They stop at the same bus stop at 9:15am. When is the next time this happens?

